



REDEFINING VISUAL EXPERIENCE

LED SCREENS PRODUCT CATALOGUE

ENDLESS CHOICES

Welcome to DIGITTEXX, a trailblazing force in the world of LED manufacturing. With an unwavering commitment to innovation and precision, we are your premier partner for cutting-edge LED display solutions. From captivating Outdoor displays that command attention to immersive Indoor installations that engage, and bespoke custom designs that transcend imagination, DIGITTEXX is at the forefront of shaping visual experiences.

Our journey is one of merging technology with artistry, where pixels become a canvas for your stories. As pioneers in LED manufacturing, we take pride in transforming spaces into dynamic realms of communication, entertainment, and inspiration. With a keen eye on quality, aesthetics, and functionality, we craft displays that redefine possibilities.

At DIGITTEXX, we don't just build LED displays; we craft symphonies of light and visuals. Join us in illuminating your ideas, events, and spaces with the brilliance of LED innovation. Discover the future of display solutions with DIGITTEXX. Your vision, our expertise – an electrifying partnership.



OUTDOOR LED DISPLAYS



INDOOR LED DISPLAYS



CUSTOM LED DISPLAYS



OUTDOOR LED DISPLAYS

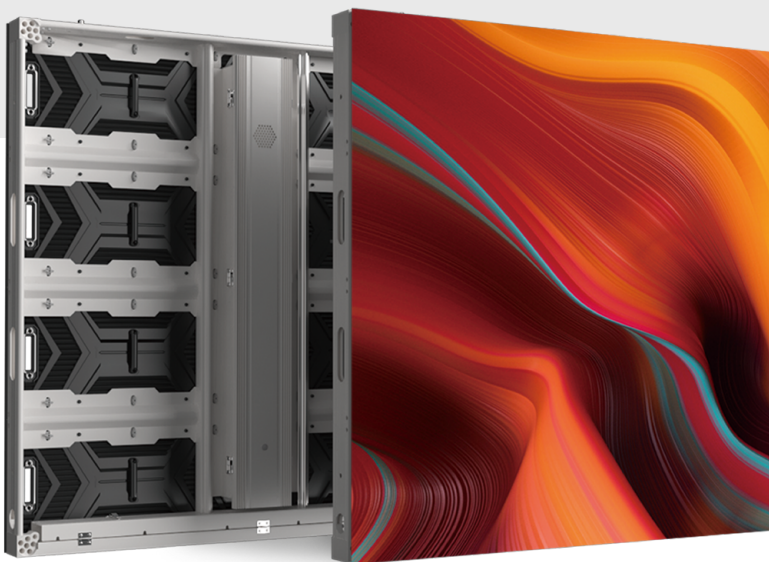
DIGITTEXX takes outdoor advertising and communication to new heights with its state-of-the-art Outdoor LED Displays. Engineered for durability and exceptional visibility, our outdoor displays are designed to withstand harsh weather conditions while delivering vibrant visuals. Whether it's large-scale digital billboards, captivating cityscape displays, or event screens that demand attention, our Outdoor LED Displays ensure your message shines brilliantly, day and night.

ASTORIA SERIES

Outdoor Wallpaper Display

Presenting the Astoria Series: Setting the bar for outdoor LED displays with unparalleled excellence. Spanning pixel pitches ranging from 3.91 to 10.42mm, this product is meticulously crafted to exceed even the loftiest expectations. Engineered to thrive in the most challenging outdoor environments, it stands as a testament to endurance, particularly in regions characterized by scorching heat and intense UV radiation.

Empowered by superior PCB construction, a streamlined circuit design, and premium-grade LEDs, the Astoria Series redefines image quality. Unveil a world of enduringly sharp and vibrant visuals that will stand the test of time, setting new standards for durability and precision.



Anti-Heat Design

6500-10000nits Brightness

Power Saving (30-40%)

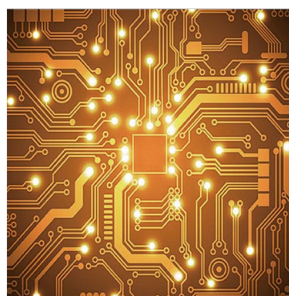
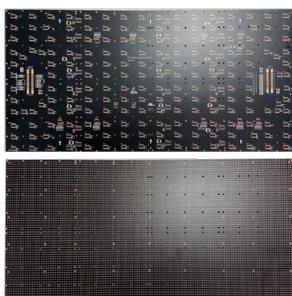
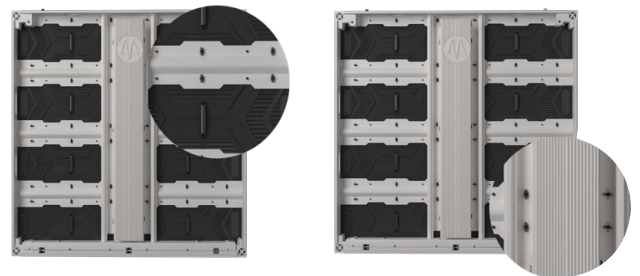
Super Light:23.5 kg/sqm

High-Refresh 

16-Bit Real Color

W: 1000mm | H: 1000mm | T: 80mm

PREMIUM OUTDOOR FIXED INSTALLATION DISPLAY



SUPER HEAT DISSIPATION PERFORMANCE

SPECIFICATIONS

Astoria Series

Pixel Pitch	3.91	4.81	6.25	7.81	10.42
LED Lamp	SMD1921	SMD1921	SMD2727	SMD2727	SMD2727
Density (dots/m²)	65410	43222	25600	16394	9210
Brightness	5500-7500nits	5500-7500nits	7500-10000nits	7500-10000nits	7500-10000nits
IP Level	IP65				
Cabinet Material	Aluminum Profile				
Scan Style	1/8	1/9	1/5	1/4	1/2
Module Weight	1.5kg				
Cabinet Weight	23.5kg				
Cabinet Size (mm)	1000mm * 1000mm / 1000mm * 500mm				
Module Size (mm)	500mm * 250mm				
Module Pixel	128dots * 64dots	104dots * 57dots	80dots * 40dots	64dots * 32dots	48dots * 24dots
Cabinet Pixel	256dots*256dots	256dots*256dots	256dots*256dots	256dots*256dots	256dots*256dots
Max Power	780 W/m ²	780 W/m ²	520 W/m ²	520 W/m ²	520 W/m ²
Average Power	256 W/m ²	256 W/m ²	190 W/m ²	190 W/m ²	190 W/m ²
Viewing Angle	H:160° / V:160°				
Control Way	Synchronous / Asynchronous				
Gray Scale	14 - 16 bits				
Operating System	Win10 / Win11				
Work Temperature	-20 to +60 C°				

DURO SERIES

Outdoor Fine-Pitch Display

Introducing the Duro Series: A masterpiece tailored to elevate outdoor fine-pitch LED displays to the pinnacle of excellence. Offering pixel pitches ranging from 2.604 to 3.91mm, it emerges as the answer to the most discerning demands. Meticulously crafted to endure challenging outdoor conditions, it stands resilient with its elevated brightness and energy-efficient design.

Incorporating an innovative fan cooling system for the control box, the Duro Series is engineered to thrive in even the harshest environments. The PCB boasts a meticulously crafted architecture, featuring a 4-layer high-precision board coupled with an enhanced copper plate. This fusion promises heightened stability and superior heat dissipation capabilities, resulting in an unparalleled performance that remains unwavering even in the face of rigorous demands.



Anti-Heat Design

Fan-Cooling System

5500-6500nits Brightness

Flexible Cabinet Size

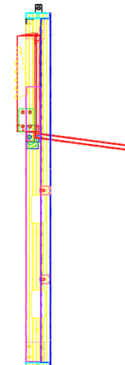
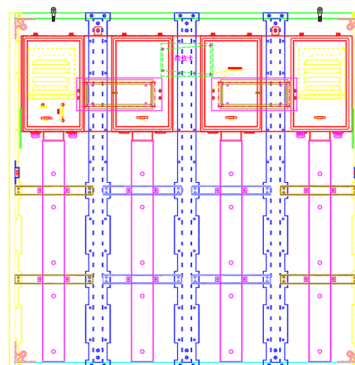
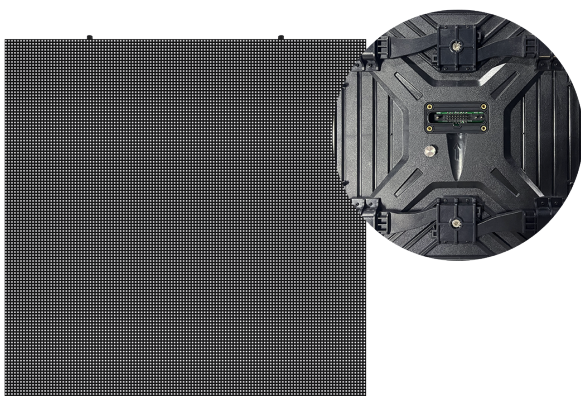
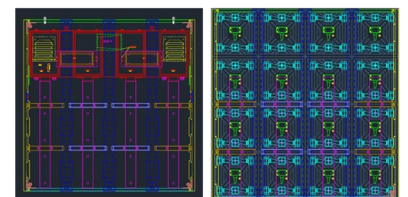
Power Saving (20-30%)

High Refresh Rate

PREMIUM OUTDOOR FINE-PITCH FIXED INSTALLATION LED DISPLAY

| Super heat dissipation performance
| Flexible cabinet selection

| High brightness
| High stability



SPECIFICATIONS

Duro Series

Pixel Pitch	3.9	2.9	2.6
LED Lamp	SMD1921	SMD1415	SMD1415
Density (dots/m²)	65535	112896	147456
Brightness	5500-8000nits	5500-6500nits	5000-6000nits
IP Level	IP65		
Scan Style	1/8s	1/14s	1/21s
Cabinet Material	Aluminum Profile		
Max Power	700 W/m ²	700 W/m ²	720 W/m ²
Average Power	210 W/m ²	210 W/m ²	220 W/m ²
Cabinet Size (mm)	1000mm*1000mm/1000mm*750mm/1000mm*500mm/ 750mm*1000mm/750mm*750mm/750mm*500mm/500mm*1000mm /500mm*750mm/500mm*500mm		
Cabinet Weight (kg)	31 kg/m ²		
Module Size (mm)	250 mm * 250 mm		
Module Pixel	64 dots * 64 dots	84 dots * 84 dots	96 dots * 96 dots
Viewing Angle	H:160° / V:160°		
Gray Scale (bit)	14 bit		
Maintenance	Front & Rear		
Work Temperature	-20 to +60 C°		



INDOOR LED DISPLAYS

Indoor spaces come alive with DIGITTEXX's Indoor LED Displays. These versatile and high-resolution screens transform interiors into dynamic visual experiences. From immersive retail displays that captivate customers to informative corporate presentations that leave a lasting impact, our Indoor LED Displays deliver stunning clarity and color reproduction. With sleek designs and customizable configurations, they seamlessly integrate into various environments, elevating engagement and communication.

CREEK SERIES

Ultra Slim HD Fine Pixel LED Display

Introducing the Creek Series: Tailor-made for exceptional indoor LED displays. Its ultra-slim and seamless cabinet design sets a new standard, available in pixel pitches of 0.93, 1.25, 1.56, and 1.87mm. Crafted with premium PCB and LEDs, the Creek Series transforms visuals into a symphony of crystal-clear imagery and dynamic colors, promising an unforgettable visual escapade.

Designed to elevate a multitude of environments, the Creek Series finds its place in airports, broadcasting studios, train stations, control rooms, movie theatres, hotels, museums, and even the heart of smart cities. Experience the future of captivating displays with the Creek Series.



Ultra thin: 33mm

High Accuracy Cabinet

4/6 Layers HDI PCB Board

CE,CB,EMC Certification

Energy Saving (20-30%)

High Stability & High Refresh

14-16bit,2K/4K/8K

W: 600mm | H: 337.5mm | T: 33mm

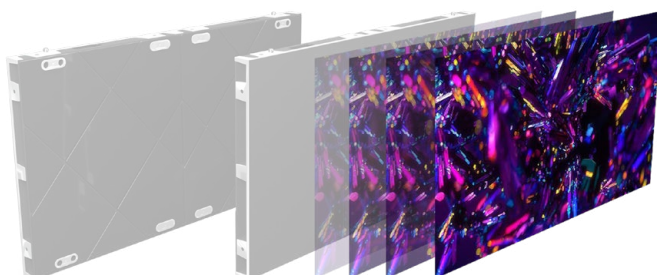
SUPERIOR IMAGE QUALITY

- | High Brightness
- | High Refresh Rate
- | High Contrast Ratio



12bit

14-16bit



RELIABILITY

- 4-6 layers high accuracy PCB |
- A more efficient circuit design |

SPECIFICATIONS

Creek Series

Pixel Pitch	CK0.93	CK1.25	CK1.56	CK1.87	CKB1.86	CKB2.5
LED Lamp	SMD MINI 4IN1	SMD1010	SMD1212	SMD1515	SMD1515	SMD2121
PCB Board	1.6mm 6layers HDI board	1.6mm 6layers HDI board	2.0mm 4layers HDI board	2.0mm 4layers HDI board	1.6mm 4layers HDI board	1.6mm 4layers HDI board
Brightness	>450nits	>600nits	>600nits	>600nits	500-600nits	500-600nits
IP Level	IP43					
Cabinet Material	Die Casting Aluminum					
Scan Style	1/46	1/30	1/32	1/30	1/43	1/32
Module Weight	0.6kg	0.6kg	0.6kg	0.6kg	0.8kg	0.8kg
Cabinet Weight	4.3kg	4.3kg	4.3kg	4.3kg	7.2kg	7.2kg
Cabinet Size (mm)	600mm*337.5mm*33mm				640mm*480mm*70mm	
Module Size (mm)	300mm*168.75mm				320mm*160mm	
Module Pixel	320dots*180dots	240dots*135dots	192dots*108dots	160dots*80dots	172dots*86dots	128dots*64dots
Cabinet Pixel	640dots*360dots	480dots*270dots	384dots*216dots	320dots*160dots	344dots*172dots	256dots*128dots
Max Power	<600 W/m ²				500 W/m ²	
Average Power	120-170 W/m ²				150 W/m ²	
Viewing Angle	H:160° / V:160°					
Maintenance	Front and Rear					
Gray Scale	14 - 16 bits					
Fresh Rate	3840 Hz				2880-3840 Hz	
Grayscale (bit)	14-16 bit					

MILES SERIES

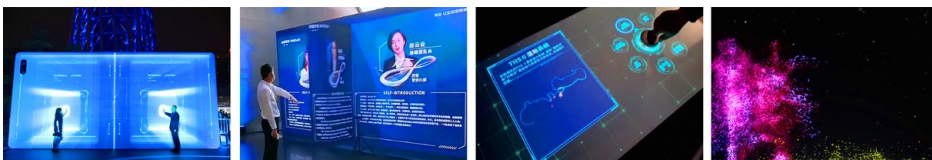
Interactive and Glass Free 3D Display

Introducing the Miles Series: A revolutionary breed of interactive and glasses-free 3D Fixed LED displays, seamlessly adapted for both indoor and outdoor use. Combining cutting-edge LED technology, intuitive software, captivating videos, and ingenious IP design, it stands as a holistic solution for crafting awe-inspiring and captivating smart displays. Our mission revolves around simplifying, enhancing, and enriching the dissemination of brands and values.

The Miles Series unlocks a realm of possibilities, transcending the conventional. It shines brilliantly in various arenas including outdoor advertising, dynamic stages, bustling shopping malls, prestigious brand stores, immersive showrooms, busy train stations, bustling airports, engaging museums, and forward-looking smart cities. Embrace the future of displays with the Miles Series, where innovation and immersion converge.



GLASS FREE 3D



INTERACTIVE MULTIMEDIA CONTENT

SPECIFICATIONS

Miles Series

Model	MT1.25	MT1.56	MT1.87	MT2.5	MTO1.93	MTO2.58	MTO2.976	MTO3.91
Pixel Pitch	1.25	1.5625	1.875	2.5	1.93	2.58	2.976	3.91
Application	Indoor				Outdoor			
LED	SMD1010	SMD1212	SMD1515	SMD2121	Micro X GOB	Micro X GOB	Micro X GOB	Micro X GOB
Module Size	300*168.75mm			320*160mm	248*248mm		250*250mm	
Brightness (cd/m²)	>450	>600	>600	600	3500	3500	5000	5500
Scan Rate	1/30s	1/32s	1/30s	1/32s	1/32s	1/24s	1/14s	1/8s
Refresh Rate	3840 Hz				2880-3840 Hz			
Max. Power	600 W/m ²				650 W/m ²			
Ave. Power	120-170 W/m ²				180 W/m ²			
Grayscale	14-16 bit				14 bit			
Cabinet Size	600*337.5*33 mm		640*480*70 mm		496*496*62 mm		500*1000*72 mm	
Cabinet Weight	4.3 kg		7.2 kg		9.2 kg		14 kg	
Maintenance	Front / Rear							
Work Temperature	-10 to +40 C°				-25 to +60 C°			

BENCH SERIES

COB Ultra Definition Led Display

Introducing the Bench Series: Crafted exclusively for indoor LED displays, this collection showcases an ultra-slim, seamless cabinet design that redefines elegance. Available in pixel pitches of 0.625, 0.781, 0.937, 1.25, and 1.56, it offers a spectrum of visual possibilities. A standout feature of the Bench Series is its COB technology, a marvel of anti-collision prowess, waterproof resilience, and moisture-proof durability. Outperforming traditional SMD displays, this innovation brings forth unparalleled longevity and performance.

The Bench Series paints a new canvas of application versatility, seamlessly fitting into the tapestry of airports, dynamic broadcasting studios, bustling train stations, command-centric control rooms, immersive movie theatres, luxurious hotels, captivating museums, and the visionary landscape of smart cities. Elevate your display experience with the sophistication and resilience of the Bench Series.



Ultra Thin: 39mm

High Accuracy Cabinet

Chip on Board Technology

CE,CB,EMC Certification

3840-7680Hz Refresh Rate

14-16bit,2K/4K/8K

P0.7 - P1.5 Full Pixel

Cabinet Thickness: 39mm

FLIP PACKAGE COB

Flip packaging is more reliable

- | Waterproof and Dustproof
- | Anti static, Anti collision
- | High Stability & Long Lifespan



12bit/1920Hz

14-16bit/3840Hz

SUPERIOR IMAGE QUALITY

- High Brightness |
- High Refresh Rate |
- High Contrast Ratio |

SPECIFICATIONS

Bench Series

Pixel Pitch	COB0.625	COB0.781	COB0.937	COB1.25	COB1.56
LED Lamp	Mini Led				
Gray Scale	14 - 16 bit				
Brightness	>600nits				
IP Level	IP43				
Cabinet Material	Die casting aluminum				
Working Voltage	100-240V AC				
Fresh Rate	3840 - 7680 aHz				
Cabinet Size (mm)	600mm * 337.5mm * 39mm				
Cabinet Pixel	960dots*540dots	768dots*432dots	640dots*360dots	480dots*270dots	384dots*216dots
Module Size (mm)	150mm * 112.5mm				150mm*168.75mm
Module Pixel	240dots*180dots	192dots*144dots	160dots*120dots	120dots*90dots	128dots*64dots
Control Mode	Synchronous / Asynchronous				
Max Power	<550 W/m ²				
Average Power	180-200 W/m ²				
Viewing Angle	H:170° / V:170°				
Maintenance	Front and Rear				
Operate Temperature	-40 to +60 C° (Work), -30 to +90 C° (Storage)				
Operating Humidity	10% - 90% RH				



CUSTOM LED DISPLAYS

At DIGITEXX, we specialize in turning visions into reality with our Custom LED Displays. Our expert team collaborates closely with clients to bring unique ideas to life, crafting bespoke LED solutions that align with specific requirements. From unconventional shapes and sizes to intricate installations that defy convention, our Custom LED Displays push the boundaries of creativity. Tailored to your imagination, these displays make a powerful statement, leaving an indelible mark on any space or event.

MATRIX SERIES

Mechanical Dynamics Matrix LED Display

Introducing the Matrix Series: A paradigm-shifting mechanical dynamics matrix LED display, seamlessly tailored for both indoor and outdoor applications. This innovation combines hardware, software, and creative videos to form a holistic solution that redefines the art of creative mechanical displays.

Harnessing the power of premium LED display technology and a meticulously crafted mechanical system, the Matrix Series boasts the ability to showcase not only crystal-clear images but also mesmerizing mechanical matrix configurations, resulting in an indelible visual spectacle that lingers long after.

The Matrix Series finds its natural habitat in a multitude of settings including captivating stages, iconic brand chain stores, immersive showrooms, bustling train stations, dynamic airports, enlightening museums, and the forward-looking landscape of smart cities. Immerse yourself in the future of displays with the ingenuity and dynamism of the Matrix Series.



Premium Indoor/Outdoor Fixed Installation Display



SPECIFICATIONS

Matrix Series

Model	MT1.25	MT1.56	MT1.87	MT2.5	MTO1.93	MTO2.58	MTO2.976	MTO3.91
Pixel Pitch (mm)	1.25	1.5625	1.875	2.5	1.93	2.58	2.976	3.91
Application	Indoor				Outdoor			
LED	SMD1010	SMD1212	SMD1515	SMD2121	Micro X GOB	Micro X GOB	Micro X GOB	Micro X GOB
Module Size (mm)	300 * 168.75			320 * 160	248 * 248		250 * 250	
Brightness (cd/m ²)	>450	>600	>600	600	3500	3500	5000	5500
Scan Rate	1/30 S	1/32 S	1/30 S	1/32 S	1/32 S	1/24 S	1/14 S	1/8 S
Refresh Rate	3840 Hz				2880 - 3840 Hz			
Max. Power	600 W/m ²				650 W/m ²			
Ave. Power	120 - 170 W/m ²				180 W/m ²			
Grayscale (Bit)	14 - 16 bit				14 bit			
Cabinet Size (mm)	600 * 337.5 * 33		640 * 480 * 70		496 * 496 * 62		500 * 1000 * 72	
Cabinet Weight (mm)	4.3 kg		7.2 kg		9.2 kg		14 kg	
Maintenance	Front and Rear							
Working Temperature	-10 to +40 C°				-25 to +60 C°			

FUNCTIONS

Horizontal Movement	YES	Single / Muti Screen	YES	Suport video & styling synchronization	YES
Vertical Movement	YES	Single / Muti Axis	YES	Support remote control	YES
Rotate	YES	Support fast & easy self programming	YES	Video format	ALL
Lifting	YES	Support third party's programming software	YES	Video customization	YES
Other Movement: S-curve, trapezoid...	YES	Support the synchronization of video and music	ODM	Interactive display	YES
Precise Speed Controlled	YES	Support video split & screen split	YES	3D Display	YES



With DIGITTEXX's range of LED display solutions, the possibilities are limitless. Experience unmatched quality, innovation, and visual impact as we shape the future of display technology.

EMAIL
enquiry@digittexx.com

MOBILE
+971 56 682 8216

ADDRESS
Meydan Free Zone- Nad Al Sheba, Dubai, U.A.E



DIGITTEXX.COM

